

CS-I series battery installation guide

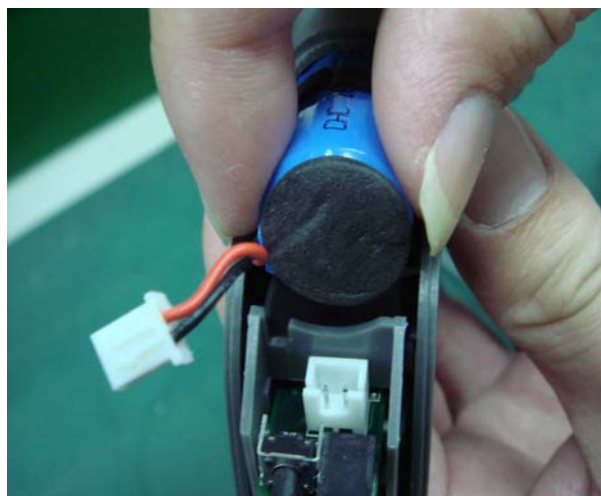
Step 1. Remove the screw at the bottom of the handheld unit.



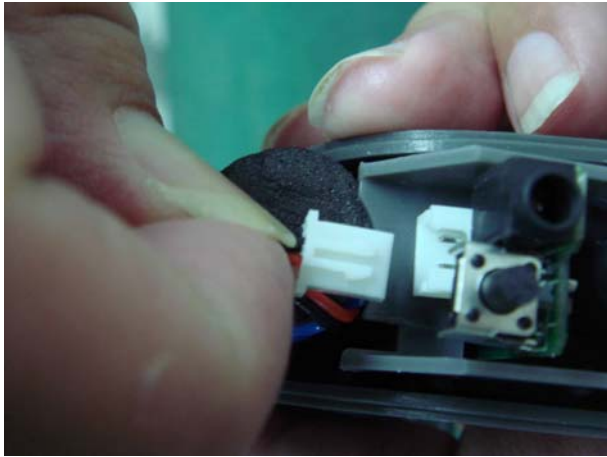
Step 2. Remove the bottom cover of the handheld unit.



Step 3. Insert the battery. Leads the cable going through the groove.



Step 4. Plug the battery connector into PCB socket.



Step 5. Install the bottom cover of handheld unit This step is difficult. The hint is to fix one side of the bottom cover firstly, then the other side. However, it needs practice.



Step 6. Screw the screw until the bottom cover is secured.

